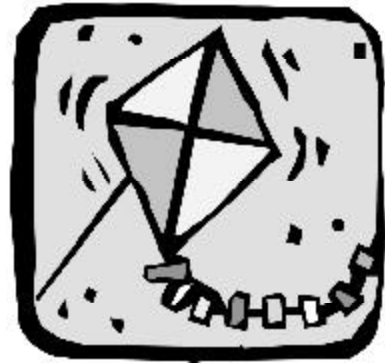


# What About Wind?

<u>M.P.H.</u>	<u>Characteristics</u>	<u>Name</u>
1-3	smoke drifts	CALM
4-7	leaves rustle	LIGHT
8-12	leaves dance	GENTLE
13-18	trees toss, dust flies	MODERATE
19-24	small trees sway	FRESH
25-31	large branches sway	STRONG



Material	Wind Needed(M.P.H.)
Light paper	4-12
Light plastic	4-18
Heavy plastic	13-31
Light cloth	4-31
Sturdy cloth	13-31

Kite Type	Wind Needed (M.P.H.)
Sled	4-18
Diamond	4-18
Delta	4-12
Box	10-31
Fighter	4-12

**Problem Solving:**

If your kite spins, and the wind is not too strong

- add a longer tail
- check that the struts are equal lengths
- move the tow point back, towards the kite

If the kite doesn't launch, and the wind is strong enough

- replace or remove part of the tail
- move the tow point forward

If the kite pulls to one side

- move the tow point forward
- tape a piece of tail to the opposite side